

# CheckPoint II

## Data sheet

## Portable O<sub>2</sub> and CO<sub>2</sub> gas analyser

- For quality control of modified atmosphere packages

**NEW**



Shown with optional SmartPen and DockIn station

### Benefits

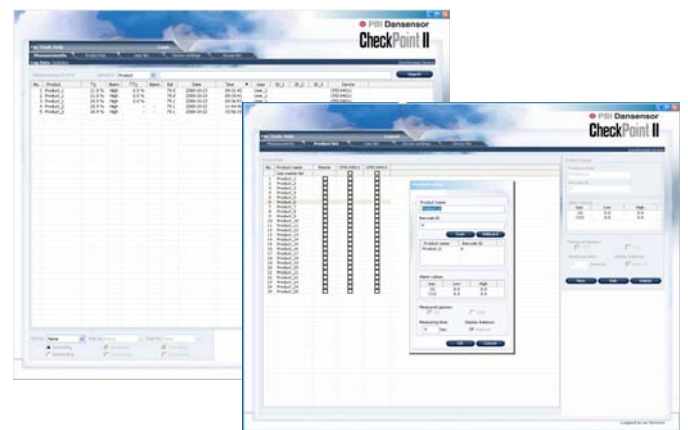
- Easy to use
- Portable
- Optional bar code scanner for easy product selection
- Easy quality control of modified atmosphere packages
- Better traceability with data logging function
- Intuitive PC software
- Alerts operator to any exceeded alarm levels
- Logging of operator name, batch numbers etc.

### Features

- Data logging of up to 25 products with each 99 measurements (more products available for selection in PC software)
- Data transfer via USB
- Available in O<sub>2</sub> or O<sub>2</sub>/CO<sub>2</sub> versions
- Long lasting lithium-ion battery
- PC software included
- 12 months' calibration interval
- Temperature and pressure compensated CO<sub>2</sub> measurement
- Delivered ready to use
- Measuring time: 6 seconds

### PC Software

The CheckPoint II is delivered with an easy to use PC software. The QC manager can easily control up to 8 CheckPoint II units in a production environment. The PC software makes it easy to set-up new products, manage operators, collect data and export data for further analysis.



### Introduction to the CheckPoint II

CheckPoint II is a portable quality control instrument for modified atmosphere packaging. In brief the CheckPoint II has data logging capabilities, the possibility to transfer data to a PC and an optional bar code scanner. Like its 'big brother' the CheckMate II, the CheckPoint II has a built-in intelligence to alert the operator to any quality problems with the gas content in the package. The CheckPoint II is ideal for small to medium volume production facilities or other situations where a portable analyser is useful.

The CheckPoint II is an easy to use headspace analyser that ensures the traceability of your modified atmosphere packaging - without relying on paper logs.

#### CheckPoint II is available in four versions:

- CheckPoint II O<sub>2</sub>
- CheckPoint II O<sub>2</sub>/CO<sub>2</sub>
- CheckPoint II O<sub>2</sub> - with built-in bar code scanner
- CheckPoint II O<sub>2</sub>/CO<sub>2</sub> - with built-in bar code scanner

#### CheckPoint II has the following options:

- SmartPen - retractable syringe
- DockIn - for easy PC connection and faster recharging

The CheckPoint II is delivered ready to use, including power supply, PC software, USB cable, storage and transportation box, spare needles and filters.

## Principle of sensors

### Oxygen sensor

The CheckPoint II O<sub>2</sub> sensor is based on an electrochemical technology. In the sensor, a chemical reaction produces a signal corresponding to the concentration of the gas. The only disadvantage of the electrochemical sensor is the cross-sensitivity towards CO<sub>2</sub>. For this reason PBI-Dansensor always recommends a CheckPoint II O<sub>2</sub>/CO<sub>2</sub> for applications containing more than 25% CO<sub>2</sub> - the reason being that the O<sub>2</sub>/CO<sub>2</sub> model compensates for the CO<sub>2</sub> content. For applications with 65-100% CO<sub>2</sub> we also recommend our CheckMate II in order to obtain a higher accuracy O<sub>2</sub> reading.

### Carbon dioxide sensor

The CO<sub>2</sub> sensor is based on infrared technology, which gives a long-lasting sensor lifetime. The CO<sub>2</sub> sensor range is 0-100%. The PBI-Dansensor CO<sub>2</sub> sensor is fully temperature and pressure compensated, which means that it is not influenced by ambient air pressure or ambient temperature.

## Common specifications

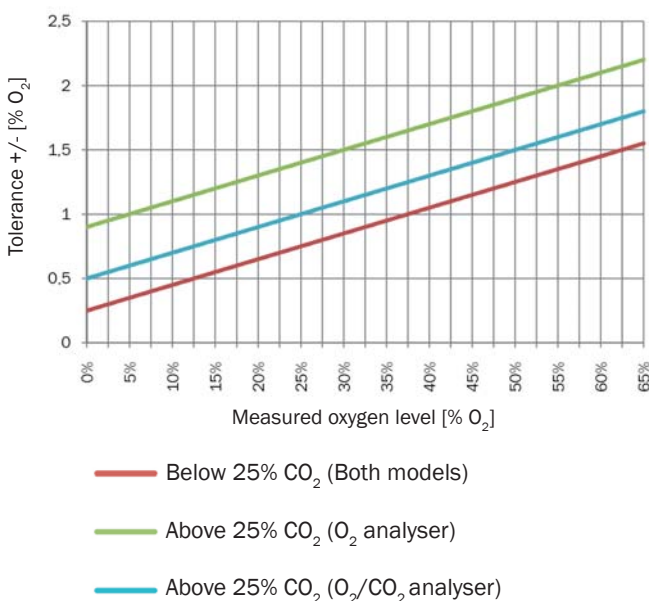
General	
Auto power off after 10 minutes	
Memory function for 25 products, each with 99 measurements	
User calibration - daily offset calibration to atmospheric air (20.9% O <sub>2</sub> )	
Cabinet	
Dimensions:	65 x 130 x 160 mm (HxWxD)
Weight:	0.7 kg
Cabinet:	IP53 & anodized aluminium
Battery and power supply	
Power supply:	100 - 240 VAC, 50 - 60 Hz, max. 20 W
Battery:	7.2V lithium ion battery, >2000 measurements per recharge
User interface	
Display:	3.1" monochrome backlit display
Connections	
USB:	USB 2.0 Connector Type A
Bar code scanner	
Safety:	Bar code scanner safety (for devices with built-in scanner only); Laser Class 1 product, according to IEC/EN 60825-1:2007

PBI-DS-Dash-gastec-CPii-LUK-1

## Sensor system

O <sub>2</sub> version	
Sensor type:	Electrochemical
Range:	0 - 100%
Accuracy:	See graph below
Sample volume:	Minimum 6 ml
Expected lifetime:	> 2 years at O <sub>2</sub> concentrations < 20.9%
CO <sub>2</sub> version	
Sensor type:	Infrared
Range:	0 - 100%
Accuracy:	2% absolute from 0-20% CO <sub>2</sub> , 3% absolute above 20% CO <sub>2</sub>
Sample volume:	Minimum 6 ml
Lifetime:	> 5 years
Resolution:	
Sensors	0.1%

## Oxygen sensor tolerance



## Options



CheckPoint II DockIn



CheckPoint II SmartPen

Distributor:

 **PBI Dansensor**

PBI-Dansensor America Inc.  
139 Harristown Road  
Glen Rock, NJ 07452 . USA  
Tel.: (+1) 201 251 6490  
Fax: (+1) 201 251 6491  
e-mail: info-us@pbi-dansensor.com  
Website: www.pbi-dansensor.com

PBI-Dansensor A/S  
DK - 4100 Ringsted  
Denmark  
Tel.: (+45) 57 66 00 88  
Fax: (+45) 57 66 00 99  
e-mail: info@pbi-dansensor.com  
Website: www.pbi-dansensor.com